

7.2.1: Describe two best practices successfully implemented by the Institution as per NAAC format provided in the Manual

Best Practice No 1

1. Title of the Practice: CO2 Footprint Reduction Initiative

2. Objectives of the Practice

To minimize the institute's CO2 emissions by adopting solar energy and implementing LED lighting systems, promote sustainable green energy practices, and create a culture of environmental consciousness.

3. The Context

The practice was designed to address the rising energy demands of the institute while reducing reliance on the conventional sources. The institute aimed to promote sustainability and reduce its carbon footprint by utilizing solar energy and energy-efficient lighting.

4. The Practice

The institute has installed a roof top solar energy electricity generation plant which is fully operational and is saving 80% of conventional energy needs. Also the energy is wheeled to the grid so that during holidays and vacations excess energy will be utilized. Also the tube lights on the campus are replaced with LED tubes.

5. Evidence of Success

As the solar roof top plant became fully operational energy bill is reduced tremendously by Rs. 4.5Lakhs per annum.

6. Problems Encountered and Resources Required

Installation and making the plant fully operational was the most difficult part. Also we had to take permissions from various authorities for installation and wheeling to grid.

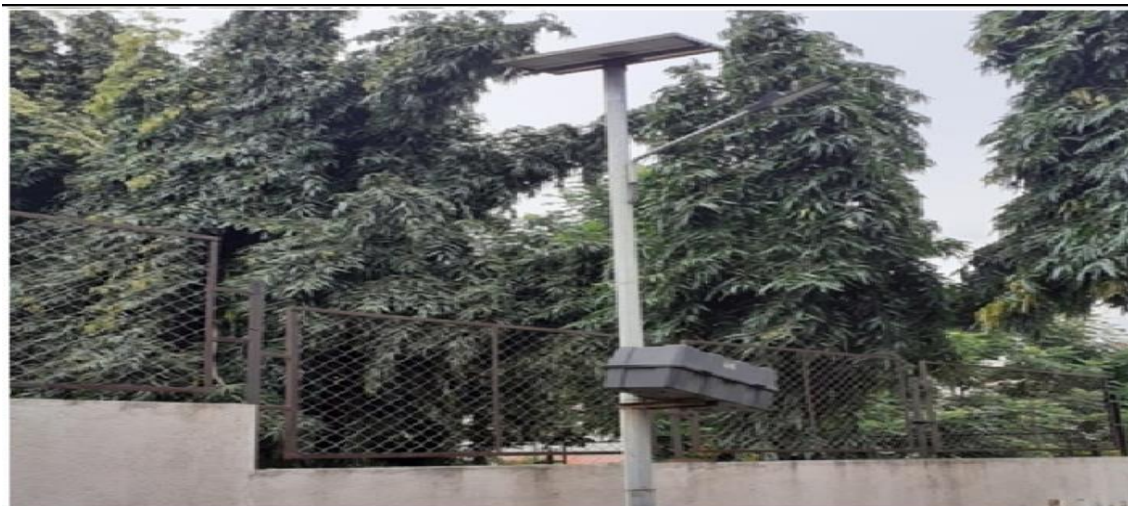
The Institution has facilities for alternate sources of energy and energy conservation:

1. Solar Energy

The total power requirement of the institute is 68.8 KWH out of which 57 KWH is generated through solar energy, almost 80% of requirement is fulfilled by solar energy. In order to minimize consumption of electricity both the Boys hostel and Girl's hostel have solar water heaters with capacity of 4000 ltrs



Type	Degree	DMS
Latitude	16.68794	16°41'16" N
Longitude	74.252	74°15'7" W



Type	Degree	DMS
Latitude	16.68804	16°41'16" N
Longitude	74.25214	74°15'7" W



Type	Degree	DMS
Latitude	16.68787	16°41'16" N
Longitude	74.25194	74°15'6" W



Type	Degree	DMS
Latitude	16.68803	16°41'16" N
Longitude	74.25217	74°15'7" W



Type	Degress	DMS
Latitude	16.68787	16°41'16" N
Longitude	74.25193	74°15'6" W

2. Wheeling to the Grid

Yes the solar power generation unit is wheeled to Maharashtra state electricity board and the excess power is provided in non-peak hours.



Type	Degress	DMS
Latitude	16.68778	16°41'15" N
Longitude	74.25194	74°15'7" W



Type	Degree	DMS
Latitude	16.6875	16°41'15" N
Longitude	74.25222	74°15'7" W

5. Use of LED bulbs

The tube lights in the premises are replaced with led lamps/tubes to save energy in the campus, 100% of replacement is done through LED. The street lights in the campus are replaced with LED solar panels.



Type	Degree	DMS
Latitude	16.68806	16°41'16" N
Longitude	74.25167	74°15'6" W



Type	Degress	DMS
Latitude	16.68794	16°41'16" N
Longitude	74.25202	74°15'7" W



Type	Degress	DMS
Latitude	16.68797	16°41'16" N
Longitude	74.25204	74°15'7" W



Type	Degree	DMS
Latitude	16.68806	16°41'16" N
Longitude	74.25167	74°15'6" W



Type	Degree	DMS
Latitude	16.68791	16°41'16" N
Longitude	74.25194	74°15'6" W

Best Practice No.2:

1. **Title of the Practice:** Institutions involvement in supporting transgender community and commercial sex workers.
2. **Objectives of the Practice:** Gender Inclusivity
3. **The Context:** Delivering the human rights and government facilities to the communities by registration to Government of India Portal for Transgender Person.
4. **The practice:** Regular visits of social work students and faculties in developing inclusivity and problem identification
5. **Evidence of success:** 112 transgenders registered and received TG certificate and ID cards and many commercial sex workers too.



6. **Problems encountered and Resources required:** oppositions received from local residents and different local communities with hostility and pacified them through institution intervention and law enforcement agency support.

Gender Inclusivity

CSIBER caters to diverse needs of the society, the department of social work is actively involved in supporting transgender community and commercial sex workers.

The Social Work students have been instrumental in registering 112 transgender's to Government of India portal <https://www.transgender.dosje.gov.in/> to receive TG Certificate and ID Card

Social work faculties and students regularly conduct field visit to identify their problems and organize programs to integrate them with society in general.



One Day National Workshop on Social inclusiveness of Transgender Community





Standing with Transgender Community



